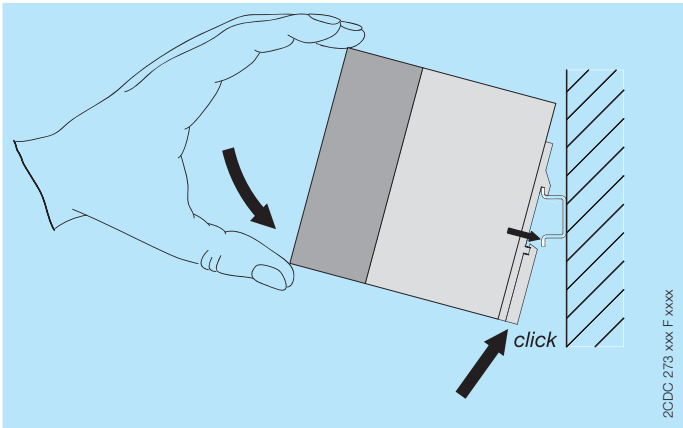


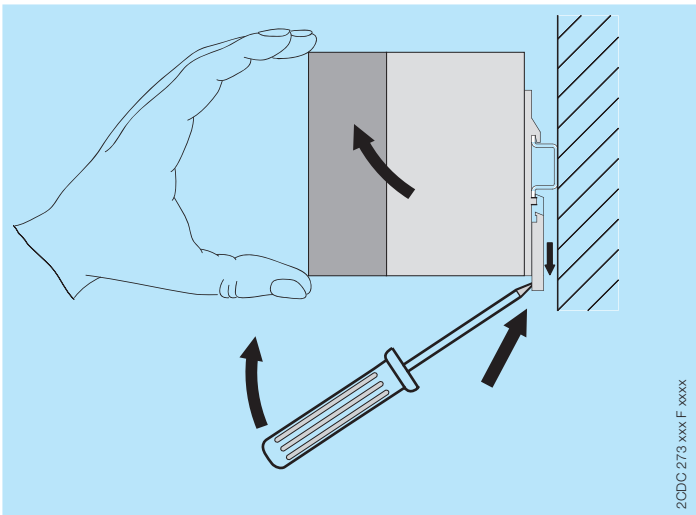
Mounting

To mount the power supply place the upper edge of the DIN rail adapter on the upper edge of the DIN rail holding the unit slightly tilted upwards as shown in the illustration. Then tilt the unit down until the latch snaps onto the DIN rail.



Un-mounting

To release the power supply pull the latching lever downwards with a screwdriver or press the upper side of the the latching lever down. The device can be unhinged from the DIN rail and removed.

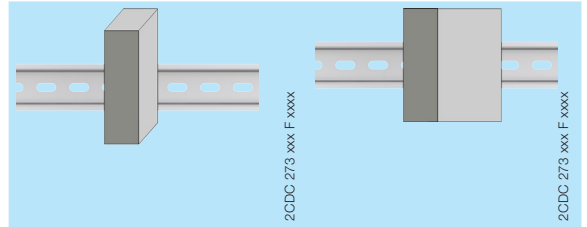


Mounting instruction - standard and flat position (tilted 90°)

The device has to be mounted with the input terminals on the bottom.

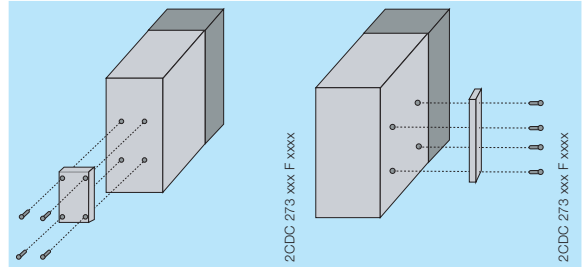
In order to ensure a sufficient convection, the minimum distance to other modules must not be less than 80 mm in vertical direction and 10 mm in horizontal direction.

For more information see instruction manual 1SVC 360 560 M0000.



Removing the DIN rail adapter

To mount the power supply in a flat position remove the DIN rail adapter that is fastened with 4 screws (screwtype, torque) and attach it on the side of the power supply.



Derating of output current for different mounting positions

The mounting position of the power supply has effect on the performance according to tables below. For maximum performance the power supply should be mounted in standard position. In order to ensure a sufficient convection, the minimum distance to other modules must not be less than 80 mm in vertical direction and 10 mm in horizontal direction.

Deviation from these recommendations can lead to shorter lifetime of the power supply and/or switch-off due to overtemperature protection.

Standard orientation

